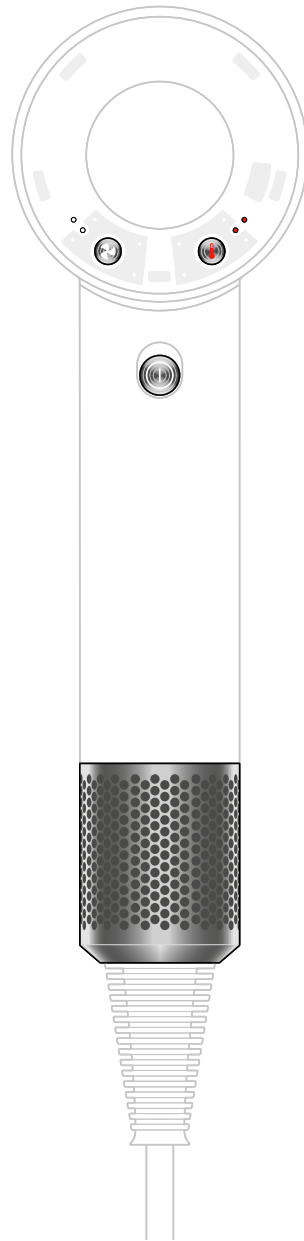


supersonic

travel

Dyson supersonic travel logo

User manual



Contents

In the box

Getting started

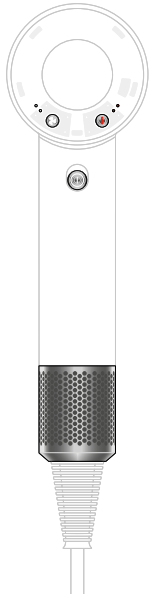
LEDs

Using your travel hair dryer

Regular filter maintenance

dyson

In the box



Dyson Supersonic™
Travel hair dryer

View of the back of the Dyson Supersonic travel hair dryer showing the flow button on the left and the temperature button on the right. The power button and cold shot buttons shown on the handle. The filter cage located at the bottom of the handle.



Smoothing nozzle

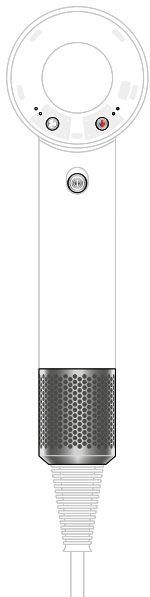
A flat, straight nozzle.

Some attachments may not be included.

Compatible with Dyson Supersonic Nural™
and Dyson Supersonic™ hair dryer attachments.

You can buy additional attachments at www.dyson.com.

In the box



Dyson Supersonic™
Travel hair dryer

View of the back of the Dyson Supersonic travel hair dryer showing the flow button on the left and the temperature button on the right. The power button and cold shot buttons shown on the handle. The filter cage located at the bottom of the handle.



Styling concentrator

Attachment with a flattened, flared nozzle.

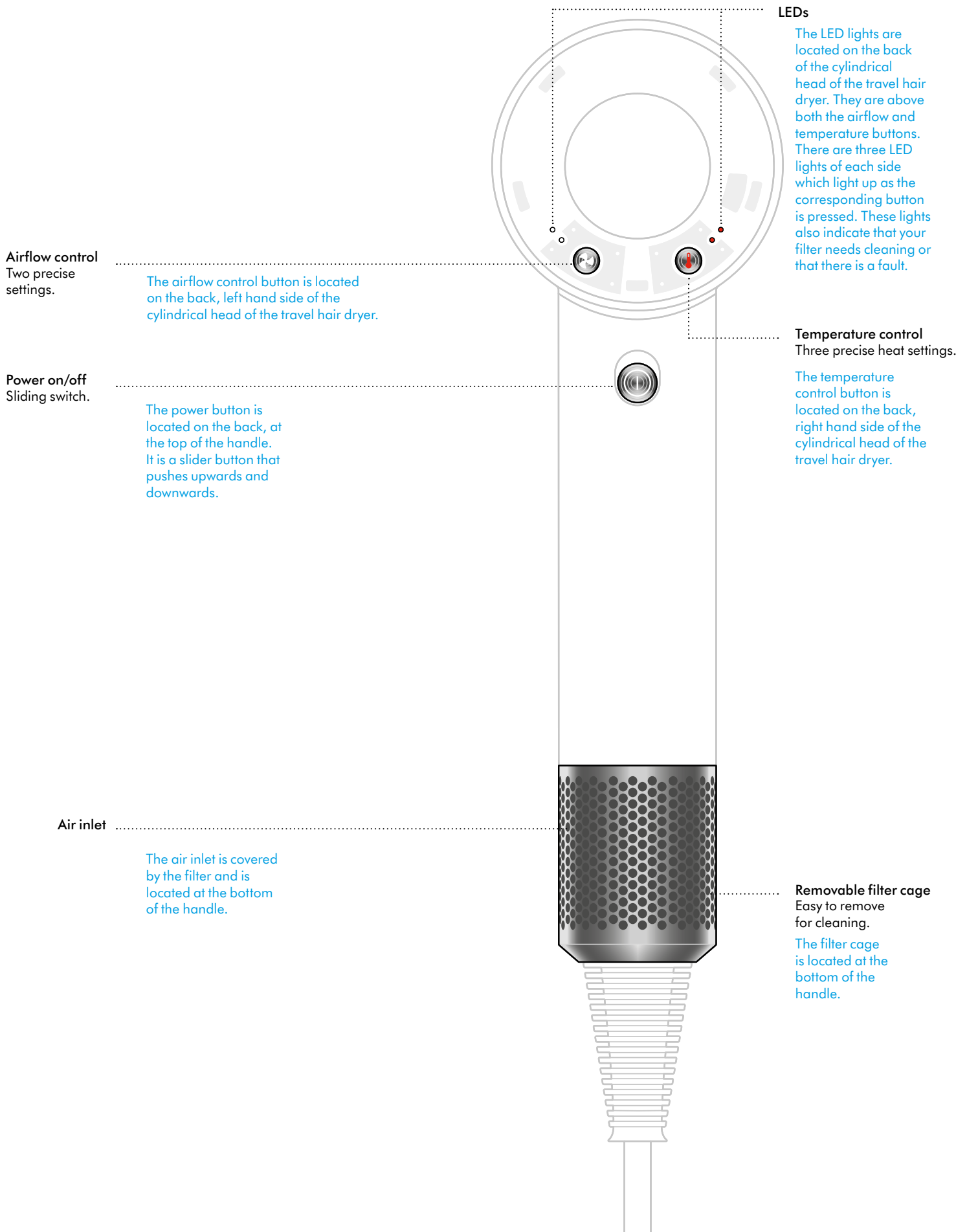
Some attachments may not be included.

Compatible with Dyson Supersonic Nural™ and Dyson Supersonic™ hair dryer attachments.

You can buy additional attachments at www.dyson.com.

Getting started

View of the back of the Dyson Supersonic travel hair dryer showing the flow button on the left with LED lights and the temperature button on the right, also with LEDs. The power button and cold shot buttons shown on the handle.



LEDs

Settings

The LED lights indicate which settings you are using.

Airflow

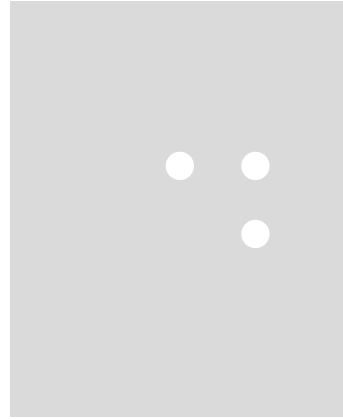
The white lights indicate airflow speed:

Two lights for high.

One light for gentle.

Two white LEDs illuminated

One white LED illuminated



High

Gentle

Temperature

The red lights indicate airflow temperature:

Two lights for high.

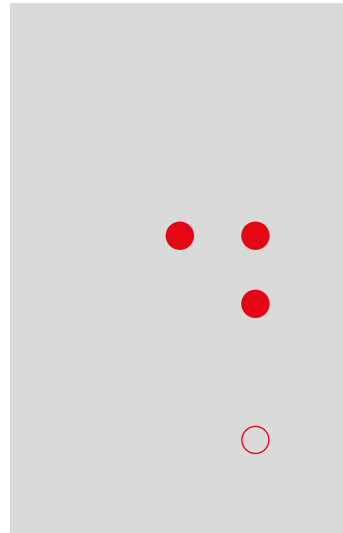
One light for low.

No lights for cool.

Two red LEDs illuminated.

One red LED illuminated.

No red LED



High

Low

Cool

Diagnostics

The LEDs will flash continuously to let you know that your machine needs attention.

If the white lights flash, turn the machine off, clean the filter and try turning the machine on again. Follow the instructions or watch the video at [dyson.com/yoursupersonic](https://www.dyson.com/yoursupersonic)

If the red lights are flashing, unplug the machine, wait 30 seconds, and plug it back in.

If both red lights continue to flash, contact the Dyson Helpline.

Don't turn back on.



Two flashing white LEDs.



Two flashing red LEDs.

Using your travel hair dryer

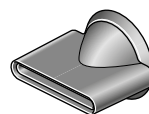
Your Dyson Supersonic™ Travel hair dryer has magnetic styling attachments, for easy fitting and rotation during styling.

Remove your attachments using the cool edges.

Heat Shield technology keeps the surface of your styling attachments cool.

Styling concentrator

Wider and thinner for precision styling.



Attachment with a flattened, flared nozzle.

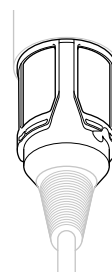
Regular filter maintenance

The filter must be cleaned when the white LEDs start flashing.

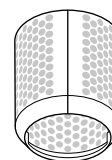
Ensure that you unplug your appliance from the mains electricity supply and allow to cool down before cleaning your filter.

The Dyson Supersonic™ Travel hair dryer has highly tuned technology to give outstanding performance.

This technology needs to be kept free from dust and hair product residue. Maintenance is required to maintain performance.



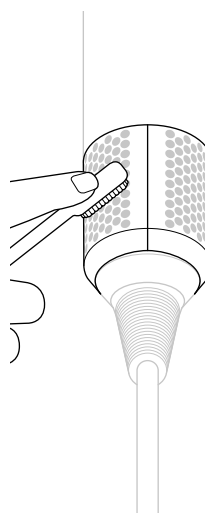
Filter mesh



Filter cage

Step 1

Using circular motions and a soft brush or lint-free cloth, clean the filter cage thoroughly.



In circular motions, use a soft brush or lint-free cloth to clean the filter cage

Using your travel hair dryer

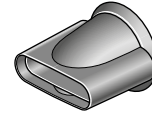
Your Dyson Supersonic™ Travel hair dryer has magnetic styling attachments, for easy fitting and rotation during styling.

Remove your attachments using the cool edges.

Heat Shield technology keeps the surface of your styling attachments cool.

Smoothing nozzle

Helps create volume and body. Decreases frizz for a smooth, natural look.



A flat, straight nozzle.

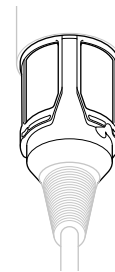
Regular filter maintenance

The filter must be cleaned when the white LEDs start flashing.

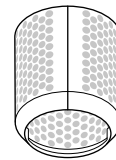
Ensure that you unplug your appliance from the mains electricity supply and allow to cool down before cleaning your filter.

The Dyson Supersonic™ Travel hair dryer has highly tuned technology to give outstanding performance.

This technology needs to be kept free from dust and hair product residue. Maintenance is required to maintain performance.



Filter mesh



Filter cage

Step 1

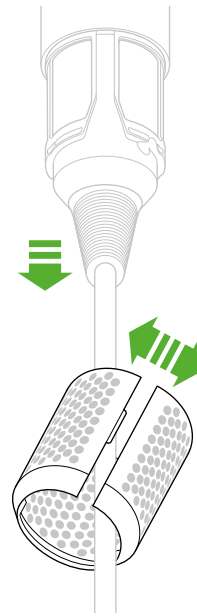
Using circular motions and a soft brush or lint-free cloth, clean the filter cage thoroughly.

In circular motions, use a soft brush or lint-free cloth to clean the filter cage

Step 2

Hold the handle of your appliance and pull the filter cage downwards, onto the cable.

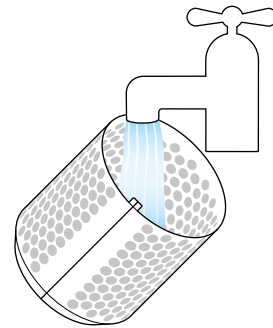
Gently pull open the filter cage and slide it off the cable.



Gently pull the filter cage downwards towards the cable.

Step 3

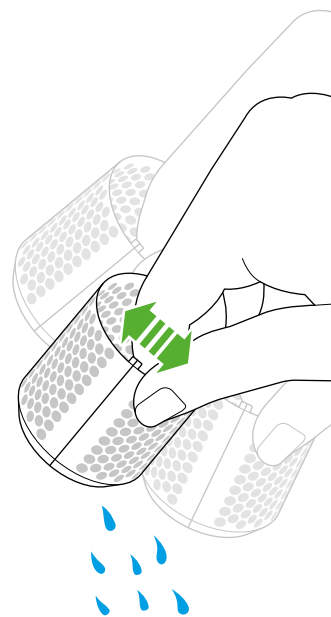
Wash the filter cage under a warm, running tap.



Wash the filter cage under the tap.

Step 4

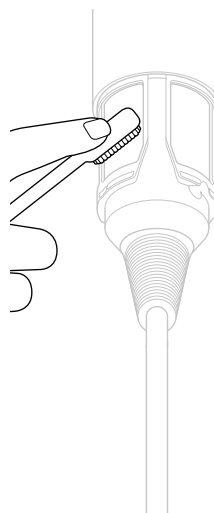
Shake the filter cage to remove the majority of the excess water, then leave to dry naturally.



Step 5

Using circular motions and a soft brush or lint-free cloth, clean the filter mesh until all the debris has been removed.

Do not use water or chemicals to clean the filter mesh.

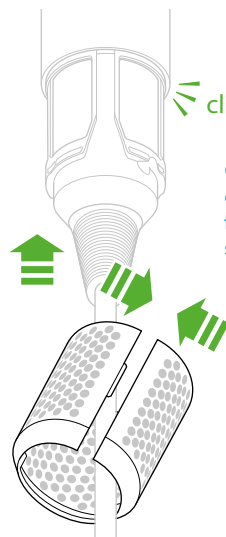


In circular motions, use a soft brush or lint-free cloth to clean around the filter mesh

Step 6

Gently pull the filter cage open and slide it onto the cable.

Slide the filter cage towards the handle and twist until it snaps into place.



Gently open the filter cage and slide the cage towards the handle, twist until it snaps into place