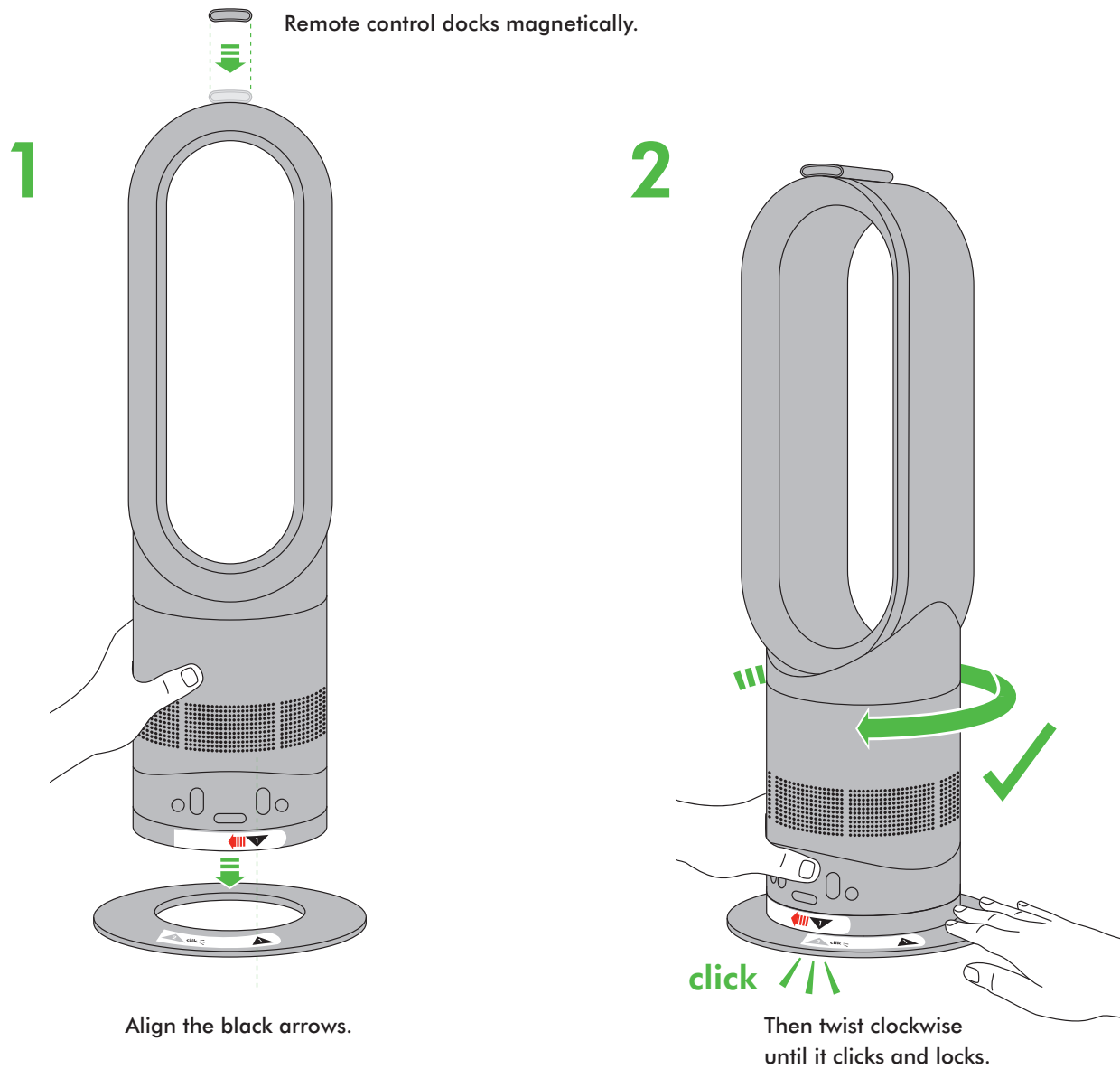


ASSEMBLY



REGISTER
YOUR FREE 2 YEAR
GUARANTEE TODAY



DYSON CUSTOMER CARE

THANK YOU FOR CHOOSING TO BUY A DYSON APPLIANCE

After registering your free 2 year guarantee, your Dyson appliance will be covered for parts and labour for 2 years from the date of purchase, subject to the terms of the guarantee.

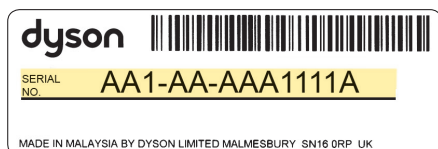
If you have any questions about your Dyson appliance, call the Dyson Helpline with your serial number and details of where/when you bought the appliance.

Most questions can be solved over the phone by one of our trained Dyson Helpline staff.

Alternatively, visit www.dyson.co.uk/support (UK) or www.dyson.ie/support (ROI) for online help, general tips and useful information about Dyson.

Your serial number can be found on your rating plate which is on the base of the appliance.

Note your serial number for future reference.



This illustration is for example purposes only.

3 EASY WAYS TO REGISTER YOUR FREE 2 YEAR GUARANTEE



REGISTER ONLINE

Visit our website to register your full parts and labour guarantee online.

www.dyson.com/register



REGISTER BY PHONE

Call our dedicated Helpline.
Monday to Friday 8am - 8pm
Saturday and Sunday 8am - 6pm

UK 0800 298 0298
ROI 01 475 7109



REGISTER BY MAIL

Complete and return the form to Dyson in the envelope supplied.

IMPORTANT SAFETY INSTRUCTIONS

BEFORE USING THIS APPLIANCE READ ALL INSTRUCTIONS AND CAUTIONARY MARKINGS IN THIS MANUAL AND ON THE APPLIANCE

When using an electrical appliance, basic precautions should always be followed, including the following:

WARNING

THE HEATER AND THE REMOTE CONTROL BOTH CONTAIN MAGNETS.

1. Pacemakers and defibrillators may be affected by strong magnetic fields. If you or someone in your household has a pacemaker or defibrillator, avoid placing the remote control in a pocket or near to the device.
2. Credit cards and electronic storage media may also be affected by magnets and should be kept away from the remote control and the top of the heater.

WARNING

TO REDUCE THE RISK OF FIRE, ELECTRIC SHOCK OR INJURY:

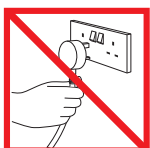
1. This heater is hot when in use and for a short period after use. To avoid burns, do not let bare skin touch hot surfaces. When moving the heater hold it by the base, not the air loop amplifier.
2. Keep combustible materials, such as furniture, pillows, bedding, papers, clothes and curtains, at least 0.9m (3 feet) from the front of the heater and keep them away from the sides and rear when the heater is plugged in.
3. Extreme caution is necessary when any heater is used by or near children or infirm persons and whenever the heater is left operating and unattended.
4. Do not allow to be used as a toy. Close attention is necessary when used by or near children. Children of less than 3 years should be kept away unless continuously supervised. Children should be supervised to ensure that they do not play with the appliance and remote control.
5. This heater and remote control are not intended for use by young children or infirm persons with reduced physical, sensory or reasoning capabilities, or lack of experience and knowledge, unless they have been given supervision or instruction by a responsible person concerning use of the heater to ensure that they can use it safely.
6. Children aged from 3 years and less than 8 years shall only switch on/off the appliance provided that it has been placed or installed in its intended normal operating position and they have been given supervision or instruction concerning use of the appliance in a safe way and understand the hazards involved. Children aged from 3 years and less than 8 years shall not plug in, regulate and clean the appliance or perform user maintenance. CAUTION – Some parts of this product can become very hot and cause burns. Particular attention has to be given where children and vulnerable people are present.
7. The base must be fitted securely before operating. Do not dismantle or use without the base fitted.
8. Suitable for dry locations ONLY. Do not use outdoors or on wet surfaces. Do not use in bathrooms, laundry areas and similar indoor locations. Never locate the heater where it may fall into a bath or other water container. Do not use or store where it may get wet or in the immediate surroundings of a bath, a shower, or a swimming pool.
9. A heater has hot parts inside. Do not use it in areas where petrol, paint, or flammable liquids are used or stored or where their vapours are present. Do not use in conjunction with or directly next to an air freshener or similar products.
10. Do not locate directly below a mains electricity supply socket.
11. Always plug directly into a wall socket. Never use with an extension cable as overloading may result in the cable overheating and catching fire.
12. Do not handle any part of the plug or heater with wet hands.
13. Do not unplug by pulling on the cable. To unplug, grasp the plug, not the cable.
14. Do not stretch the cable or place the cable under strain. Do not run the cable under carpeting. Do not cover the cable with throw rugs, runners, or similar coverings. Do not route the cable under furniture or appliances. To avoid a tripping hazard arrange the cable away from traffic areas so that it will not be tripped over.
15. Do not use with a damaged cable or plug. If the supply cable is damaged it must be replaced by Dyson or its service agent or similarly qualified persons in order to avoid a hazard.
16. To disconnect the heater, turn the controls off, then remove the plug from the socket. Always unplug the heater when not in use.
17. Do not use if the heater malfunctions or has been dropped or damaged in any manner. Contact the Dyson Helpline or return to an authorised service facility for examination and/or repair.
18. To prevent a possible fire, do not use with any opening or exhaust blocked, and keep free of dust, lint, hair, and anything that may reduce airflow. Do not put any object into the inlet grill or the exhaust opening as this may cause an electric shock or fire, or damage the heater.
19. Do not use on soft surfaces, such as a bed, where openings may become blocked.
20. Use only as described in this Dyson Operating Manual. Any other use not recommended by the manufacturer may cause fire, electric shock, or injury to persons.
21. In order to avoid overheating and fire hazard, do not cover the heater.
22. Choking hazard: the remote control unit contains a small battery. Keep the remote control away from children and do not swallow the battery. If the battery is swallowed seek medical advice at once.
23. The heater should be positioned so the airflow is directed away from any walls or room corners.

IMPORTANT SAFETY FEATURES

For your safety this heater is fitted with automatic cut-out switches that operate if the heater tips over or overheats. If the switches operate, unplug the heater and allow it to cool. Before restarting the heater check and clear any blockages and ensure the heater is on a solid level surface.

READ AND SAVE THESE INSTRUCTIONS

THIS DYSON APPLIANCE IS INTENDED FOR HOUSEHOLD USE ONLY



Do not pull on the cable.



Do not store near heat sources.



Do not use near open flames.



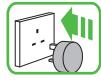
Do not carry by the air loop amplifier. The air loop amplifier is not a handle.



In order to avoid overheating and fire hazard, do not cover the heater.

Controls

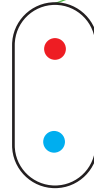
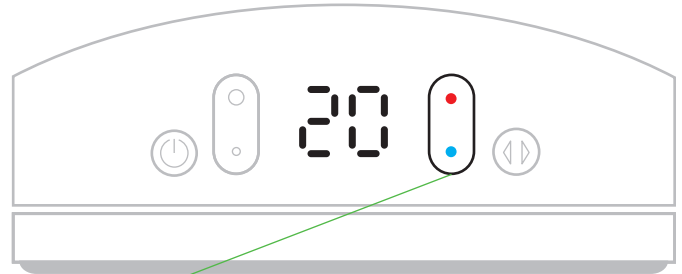
1. Power on



Each time the heating mode is selected, it conducts a short calibration cycle. Airflow will be automatically controlled during this cycle. Once the calibration cycle is complete, it will revert to the selected airflow speed.

On first use, the heater will default to a temperature 1°C higher than the current room temperature. Thereafter, the heater will remember the last target temperature set.

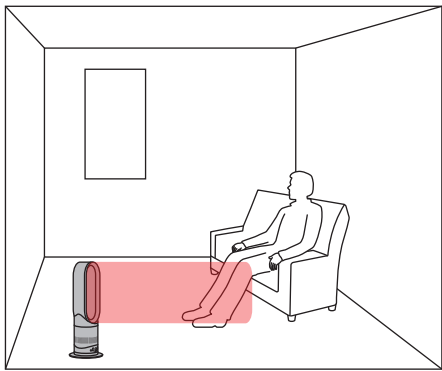
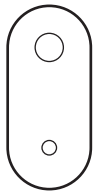
2. Thermostat control



Select the desired room temperature. Pressing red increases the target temperature, blue decreases it. The heater will not operate unless the target temperature is above the room temperature.

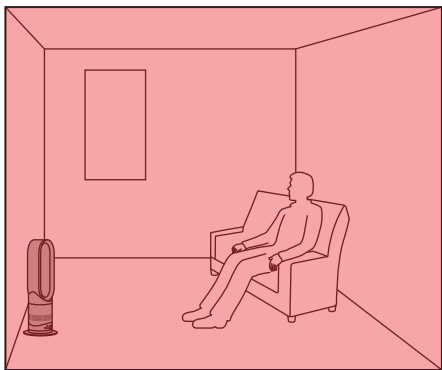
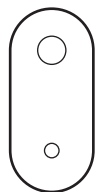
Heating mode

Spot heat



Select a low flow of air.

Whole room

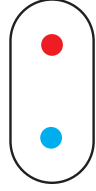
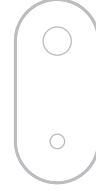
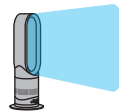


Select a high flow of air.



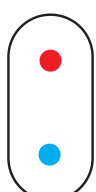
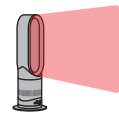
For best results turn on the oscillation control.

Cool air mode



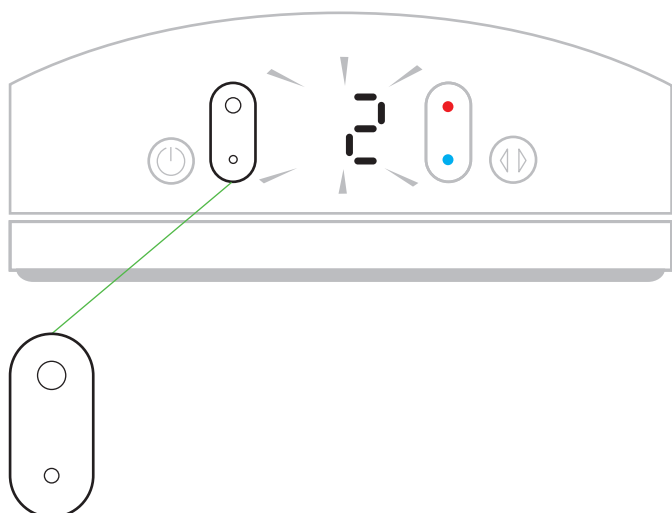
Press the blue thermostat control button to change the target temperature to 0°C. The power button light will change from red to blue. To adjust the airflow speed use the airflow speed control.

To return to heating mode



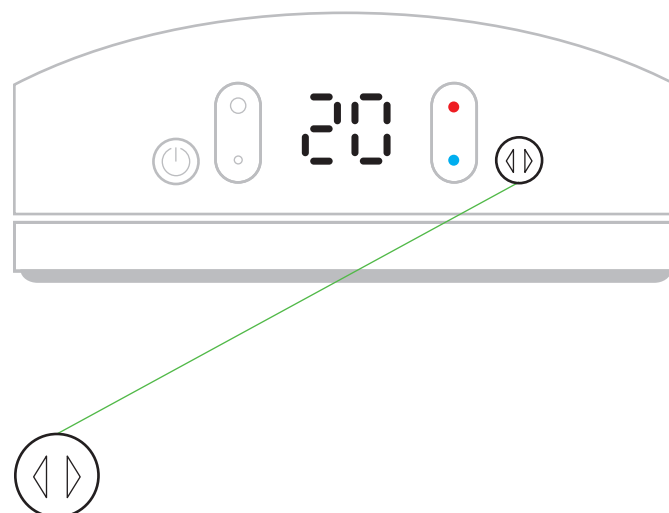
Press the red thermostat control button until the digital display shows the desired target temperature. The power button light will change from blue to red.

3. Airflow speed control



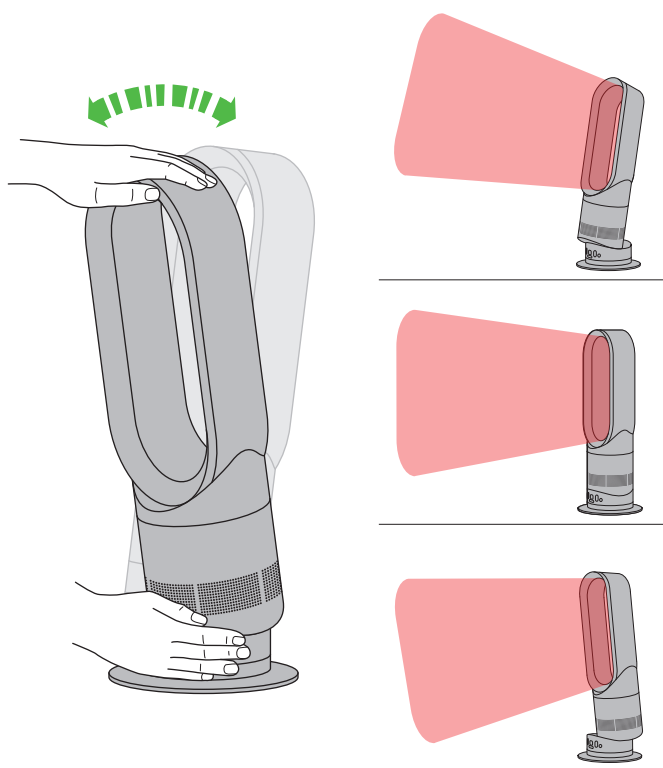
To change the airflow speed press the airflow speed control button. The digital display will show the new speed; after 3 seconds it will change back to the target temperature.

4. Oscillation control



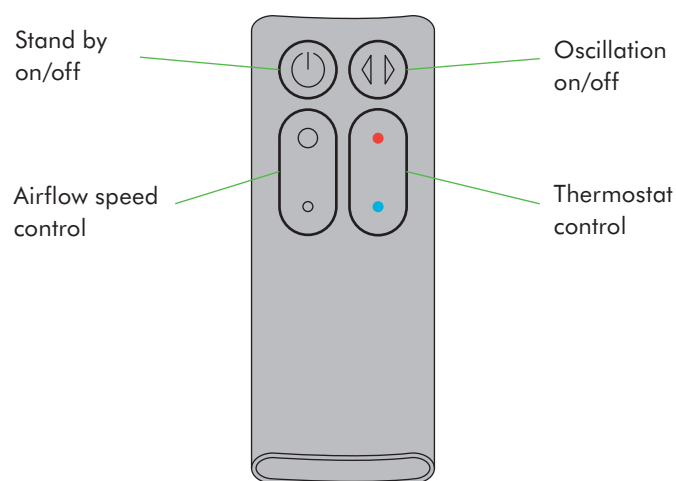
To start the heater oscillating, press the oscillation control button. To stop the heater oscillating, press it again. The heater will not oscillate when the control buttons are pressed.

Tilt function

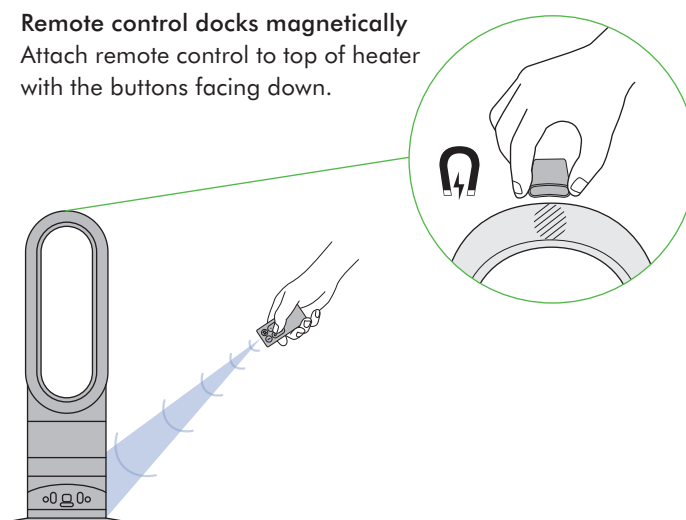


Carefully hold the base and the top of the air loop amplifier. Tilt forward or backward for the required airflow angle.

Power and remote control

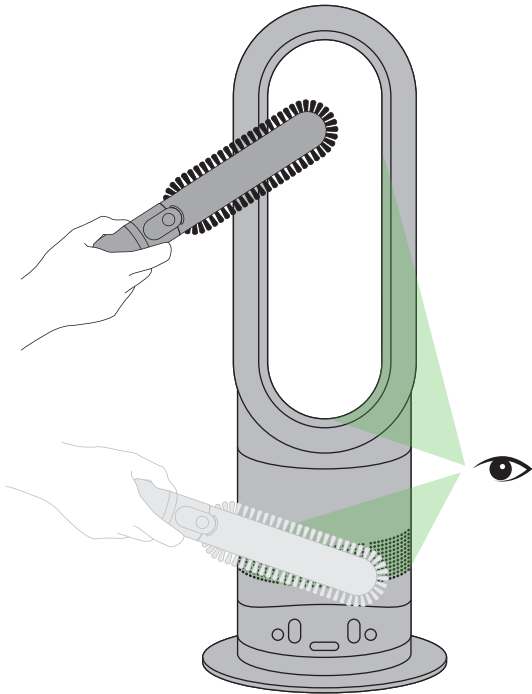
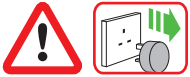


Remote control docks magnetically
Attach remote control to top of heater with the buttons facing down.



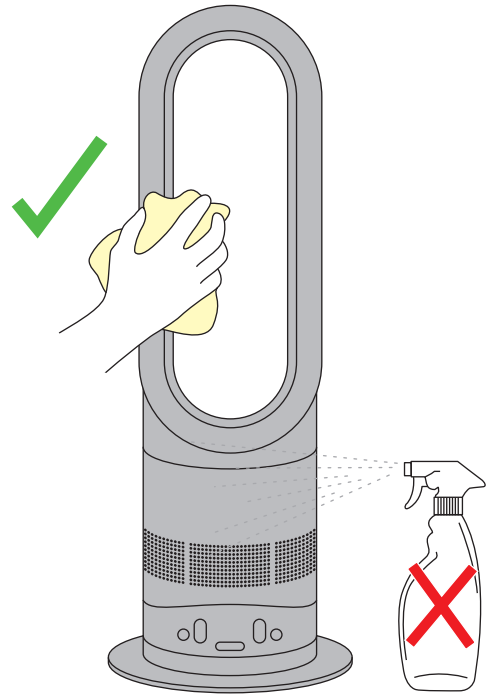
To operate, point remote control toward the front of the base.

Clearing blockages



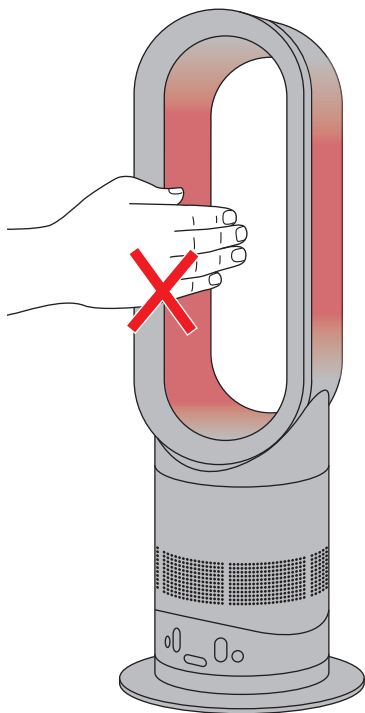
Ensure the heater is unplugged and has been allowed to cool. Look for blockages in the air inlet holes and in the small aperture inside the air loop amplifier. Use a soft brush to remove debris.

Cleaning



Unplug from the mains electricity supply. Allow to cool for 1 to 2 hours before cleaning if the heater has been in use. To clean, wipe with a dry or damp cloth. Do not use detergents or polishes.

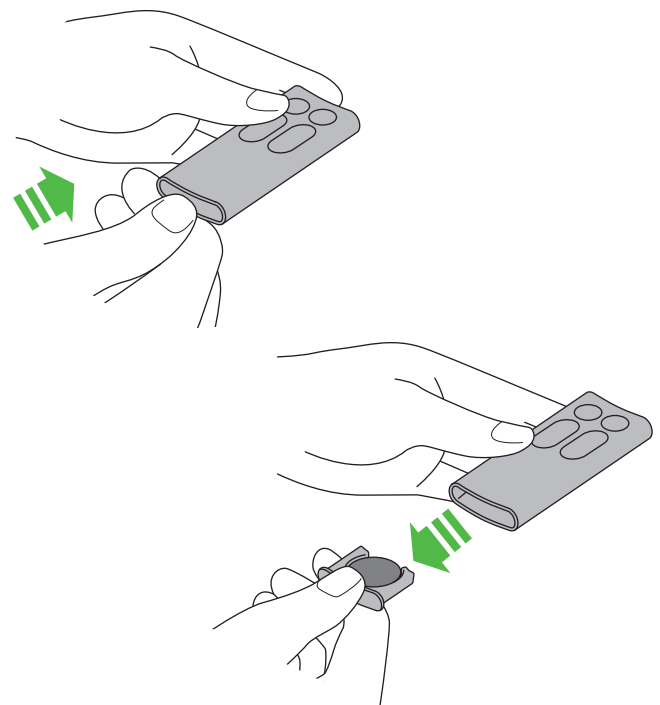
Caution: hot when in use



This heater is hot when in use and for a short period after use. Do not let bare skin touch hot surfaces. If children are present, consider positioning the heater out of their reach.

Battery replacement

Battery type CR 2032.



Press the end of the remote to release the battery.

USING YOUR DYSON HEATER

PLEASE READ THE 'IMPORTANT SAFETY INSTRUCTIONS' IN THIS DYSON OPERATING MANUAL BEFORE PROCEEDING.

OPERATION

- The base must be fitted securely before operating. Do not dismantle or use without the base fitted.
- The heater will not operate unless the target temperature is above the room temperature.
- Each time the heating mode is selected, it conducts a short calibration cycle. Airflow will be automatically controlled during this cycle. Once the calibration cycle is complete, it will revert to the selected airflow speed.
- The heater will not oscillate when the control buttons are pressed.
- For your safety this heater is fitted with automatic cut-out switches that operate if the heater tips over or overheats. If the switches operate, unplug the heater and allow it to cool. Before restarting the heater check and clear any blockages and ensure the heater is on a solid level surface.
- If power is interrupted an E1 or E5 failure message will be displayed. The heater will need to be turned off and unplugged until the display is clear, before being turned back on. If the problem persists, call the Dyson Helpline.
- Do not carry out any maintenance or repair work other than that shown in this Dyson Operating Manual, or advised by the Dyson Helpline.
- Do not lubricate any part of this heater.

TILT FUNCTION

Carefully hold the base and the top of the air loop amplifier. Tilt forward or backward for the required airflow angle.

CLEANING

- Turn the heater into stand by mode/off.
- Unplug from the mains electricity supply.
- Allow to cool for 1 to 2 hours before cleaning if the heater has been in use.
- To clean, wipe with a dry or damp cloth only.
- Do not use detergents or polishes to clean the heater.

STORAGE

- When not in use, unplug from the mains electricity supply.
- Store the heater in a dry location and arrange the cable away from the traffic areas so that it will not be tripped over or damaged.

BATTERY REPLACEMENT



CAUTION:

- Turn the heater into standby mode and unplug from the mains electricity supply before replacing the battery.
- Ensure the polarity is correct when installing the battery.
- Do not attempt to dismantle or charge the battery. Keep away from fire.
- Follow battery manufacturers' instructions when installing the new battery (battery type CR 2032).

TROUBLESHOOTING

- Remember: Always unplug from the mains electricity supply before inspecting for problems.
- If the heater will not operate, first check the mains socket has electricity supply and that the plug is properly inserted into the socket.
- If you are still experiencing problems, call the Dyson Helpline.
- For additional online help visit:
UK: www.dyson.co.uk/AM04gettingstarted
ROI: www.dyson.ie/AM04gettingstarted

GUARANTEE TERMS & CONDITIONS

DYSON CUSTOMER CARE

THANK YOU FOR CHOOSING TO BUY A DYSON APPLIANCE

After registering your free 2 year guarantee, your Dyson appliance will be covered for parts and labour for 2 years from the date of purchase, subject to the terms of the guarantee.

If you have any questions about your Dyson appliance, call the Dyson Helpline with your serial number and details of where/when you bought the appliance. Most questions can be solved over the phone by one of our trained Dyson Helpline staff.

Alternatively, visit www.dyson.co.uk/support for online help, general tips and useful information about Dyson.

If your Dyson appliance needs a service, call the Dyson Helpline so we can discuss the available options. If your Dyson appliance is under guarantee, and the repair is covered, it will be repaired at no cost.

Your serial number can be found on your rating plate which is on the base of the appliance.

PLEASE REGISTER AS A DYSON APPLIANCE OWNER

To help us ensure you receive prompt and efficient service, please register as a Dyson appliance owner. There are three ways to do this:

- Online at www.dyson.co.uk/register
- Telephone the Dyson Helpline.
- Complete the enclosed form and post it to us.

This will confirm ownership of your Dyson appliance in the event of an insurance loss, and enable us to contact you if necessary.

LIMITED 2 YEAR GUARANTEE

TERMS AND CONDITIONS OF THE DYSON 2 YEAR LIMITED GUARANTEE

WHAT IS COVERED

- The repair or replacement of your Dyson appliance (at Dyson's discretion) if it is found to be defective due to faulty materials, workmanship or function within 2 years of purchase or delivery (if any part is no longer available or out of manufacture Dyson will replace it with a functional replacement part).
- Where this appliance is sold outside of the EU, this guarantee will only be valid if the appliance is used in the country in which it was sold.
- Where this appliance is sold within the EU, this guarantee will only be valid (i) if the appliance is used in the country in which it was sold or (ii), if the appliance is used in Austria, Belgium, France, Germany, Ireland, Italy, Netherlands, Spain or the United Kingdom and the same model as this appliance is sold at the same voltage rating in the relevant country.

WHAT IS NOT COVERED

Dyson does not guarantee the repair or replacement of a product as a result of:

- Accidental damage, faults caused by negligent use or care, misuse, neglect, careless operation or handling of the appliance which is not in accordance with the Dyson Operating Manual.
 - Use of the appliance for anything other than normal domestic household purposes.
 - Use of parts not assembled or installed in accordance with the instructions of Dyson.
 - Use of parts and accessories which are not genuine Dyson components.
 - Faulty installation (except where installed by Dyson).
 - Repairs or alterations carried out by parties other than Dyson or its authorised agents.
 - Blockages – please refer to the Dyson Operating Manual for details of how to look for and clear blockages.
 - Normal wear and tear, such as the battery.
- If you are in any doubt as to what is covered by your guarantee, please contact Dyson.

SUMMARY OF COVER

- The guarantee becomes effective at the date of purchase (or the date of delivery if this is later).
- You must provide proof of (both the original and any subsequent) delivery/purchase before any work can be carried out on your Dyson appliance. Without this proof, any work carried out will be chargeable. Keep your receipt or delivery note.
- All work will be carried out by Dyson or its authorised agents.
- Any parts which are replaced will become the property of Dyson.
- The repair or replacement of your Dyson appliance under guarantee will not extend the period of guarantee.
- The guarantee provides benefits which are additional to and do not affect your statutory rights as a consumer.

ABOUT YOUR PRIVACY

- Your information will be held by Dyson Limited and its agents for promotional, marketing and servicing purposes.
- If your personal details change, if you change your mind about any of your marketing preferences or if you have any queries about how we use your information, please contact Dyson Limited.
- For more information on how we protect your privacy, please see our privacy policy on the Dyson website.

DISPOSAL INFORMATION

Dyson products are made from high grade recyclable materials. Please dispose of this product responsibly and recycle where possible.

PRODUCT INFORMATION

Please note: Small details may vary from those shown.

DYSON CONTACT DETAILS

Website: www.dyson.com/support

UK:

Dyson Helpline: UK: 0800 298 0298

Monday to Friday 8am - 8pm.

Saturday and Sunday 8am - 6pm.

Email: askdyson@dyson.co.uk

Address: Dyson Limited, Tetbury Hill, Malmesbury, Wiltshire SN16 0RP England.

ROI:

Dyson Helpline: ROI: 01 475 7109

Monday to Friday 8am - 8pm.

Saturday and Sunday 8am - 6pm.

Email: askdyson@dyson.co.uk

Address: Unit 10, Grants Lane, Greenogue Business Park, Rathcoole, Dublin 24.

Serial number

Date of purchase / /

Country of purchase UK ROI

Title Surname

First name

Address

Postcode

email

Telephone Mobile

As a Dyson appliance owner, you can hear about Dyson inventions, services and products before anyone else. If it's okay to contact you, please let us know how we may do this.

We sometimes ask other companies (such as market researchers) to contact owners on our behalf. We do this to get feedback on ideas or ask you to try new products and services. Would this be okay?

By mail Yes No
 By phone Yes No
 By email Yes No
 By text message Yes No

Yes No


3 EASY WAYS TO REGISTER YOUR FREE 2 YEAR GUARANTEE



REGISTER ONLINE
 Visit our website to register your full parts and labour guarantee online.
www.dyson.com/register



REGISTER BY PHONE
 Call our dedicated Helpline.
 Monday to Friday 8am - 8pm
 Saturday and Sunday 8am - 6pm
UK 0800 298 0298
ROI 01 475 7109



REGISTER BY MAIL
 Complete and return the form to Dyson in the envelope supplied.

